

REV.	BY	DATE	P/N	J3L-IA10-SB

SPECIFICATIONS

ELECTRICAL

RESISTANCE ----- 10K OHMS  
 RESISTANCE TOLERANCE ----- ±20%  
 LINEARITY (INDEPENDENT) ----- ±5.0%  
 POWER RATING ----- 0.1 WATT  
 LEVER ELECTRICAL ANGLE ----- APPROX. 40°  
 RESOLUTION ----- ESSENTIALLY INFINITE  
 OUTPUT SMOOTHNESS ----- BELOW 0.2% AGAINST INPUT VOLTAGE  
 CONTACT RESISTANCE VARIATION ----- BELOW 5% C.R.V.  
 INSULATION RESISTANCE ----- 1000 MEGA OHMS @ 500VDC.  
 DIELECTRIC STRENGTH ----- 1 MINUTE AT 500 VAC  
 MAX. WIPER OUTPUT ----- 1 mA RECOMMENDED, 5 mA MAX.

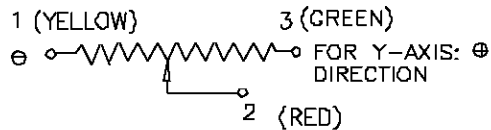
MECHANICAL

RANGE OF OPERATING LEVER ----- ±20° ~ ±25° FROM CENTER  
 OPERATING FORCE ----- APPROX. 0.55 ~ 3.04 OZ-IN.  
 OPERATING TEMPERATURE ----- -20°C TO +60°C  
 LIFE EXPECTANCY ----- 2 MILLION OPERATIONS  
 WEIGHT ----- APPROX. 21 OZ.  
 SHOCK ----- 1.0 OZ.

MATERIALS

HOUSING ----- HIGH TEMP. THERMO PLASTIC  
 ELEMENT ----- CONDUCTIVE PLASTIC

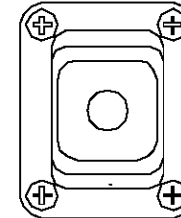
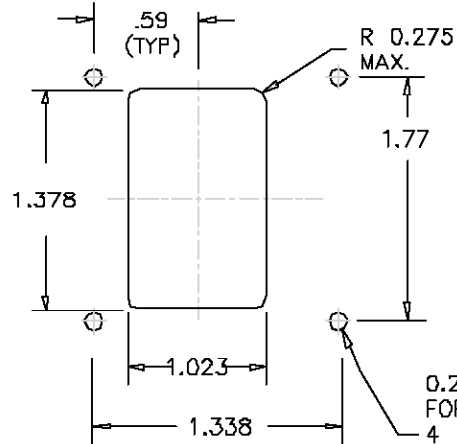
SCHEMATIC



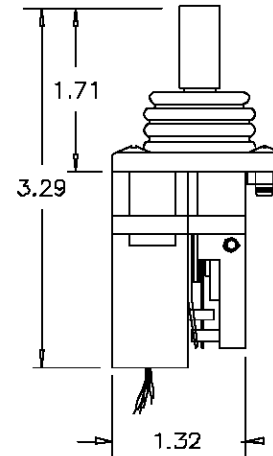
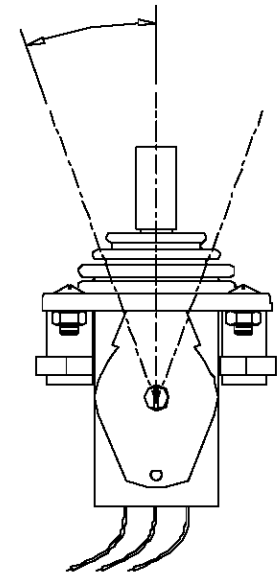
"I" LEVER OPERATION



PANEL ARRANGEMENT



ONE-DIMENSIONAL LEVER  
 WITH CENTER SPRING RETURN.  
 20 TO 25 DEGREES TYP.



Precision Sales Inc  
 38 Bishop Hollow Rd  
 Newtown Square PA 19073

610-359-1002  
 F: 610-353-1674  
 www.precisionsales.com  
 eparts@precisionsales.com

TITLE  
 JOYSTICK

PART NO.  
 J3L-IA10-SB