

# SERIES 1840 - SINGLE AND DOUBLE-POLE PUSHBUTTON SWITCHES

TO 6 (4) A 250 V AC






## PRODUCT FEATURES

- ◆ 100 million times proven switching principle with longer life endurance with 100 000 mechanical switching cycles
- ◆ Fastening by round nut M12
- ◆ Excellent actuating characteristic
- ◆ Variant for snapping on customized pushbuttons

## ON REQUEST

- ◆ Higher power with 6 (6) A 250 V AC
- ◆ Other connection types
- ◆ Cable assembly

Mechanical life endurance	10E4
Contact resistance (new condition)	< 100 mOhm (1 A 12 V DC)
Insulation resistance (new condition)	> 100 MOhm (500 V DC)
Voltage strength at 250 V	1 500 V function insulation / basic insulation 3 000 V reinforced insulation 500 V small contact distance
Proof tracking	250 PTI
Insulation spacing	acc. to EN 61058 for reinforced or double insulation
Protection type	IP 40
Ambient temperature	connection side -20 °C ... +100 °C actuating side -20 °C ... +55 °C
Flammability	UL 94 V-2
Heat and fire resistance	850 °C (category D)
Material	actuator PA housing PA glass fiber-reinforced / PA connections silver-plated
Plug force of the terminals	≤ 80 N
Approval marks	 /  / 
Suitable for appliances of protection class II	



# SERIES 1840 - SINGLE AND DOUBLE-POLE PUSHBUTTON SWITCHES

TO 6 (4) A 250 V AC

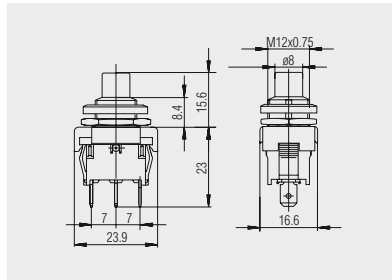
 single-pole	Actuator color / printing	Housing color	6 (4) A 250 V AC 5E4	6 (2) A 250 V AC 5E4	6 A 250 V AC 1/2 HP	6 A 125 V AC 1/4 HP	6 A 125 - 250 V AC 1/8 HP	Connection type	Connection description	Contact distance in mm	Contact material	Miscellaneous	Stock version
<b>ON/OFF switch (SPST)</b>													
1841.1101			●		●	●			4.8	≥ 3	Ag		●
1841.6101			●		●	●			4.8	≥ 3	Ag	snap-on actuator (caps see page 112)	●
<b>Normally closed contact (SPNC)</b>													
1841.1301				●			●		4.8	≥ 3	Ag		●
<b>Normally open contact (SPNO)</b>													
1841.1201				●			●		4.8	≥ 3	Ag		●
<b>Switch (SPDT)</b>													
1843.1101			●		●	●			4.8	≥ 3	Ag		●
<b>Changeover switch (SPDT momentary)</b>													
1843.1201				●			●		4.8	≥ 3	Ag		●
 double-pole	Actuator color / printing	Housing color	6 (4) A 250 V AC 5E4	6 (2) A 250 V AC 5E4	6 A 250 V AC 1/2 HP	6 A 125 V AC 1/4 HP	6 A 125 - 250 V AC 1/8 HP	Connection type	Connection description	Contact distance in mm	Contact material	Miscellaneous	Stock version
<b>ON/OFF switch (DPST)</b>													
1842.1101			●		●	●			4.8	≥ 3	Ag		●
1842.6101			●		●	●			4.8	≥ 3	Ag	snap-on actuator (caps see page 112)	●

# SERIES 1840 - SINGLE AND DOUBLE-POLE PUSHBUTTON SWITCHES

TO 6 (4) A 250 V AC



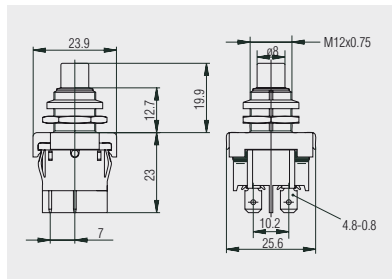
Basic types 1841 and 1843  
single-pole



Quick-connect terminal 4.8



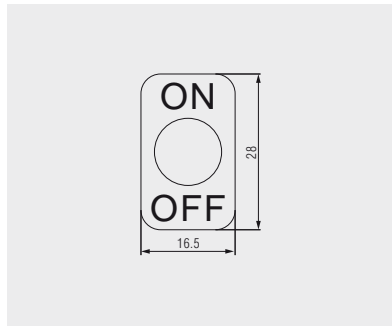
Basic type 1842  
double-pole



Quick-connect terminal 4.8



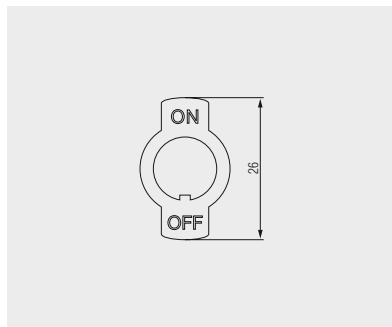
Identification plate  
240.001.011



Identification plate of aluminum for plugging on with black inscription "ON" and "OFF"



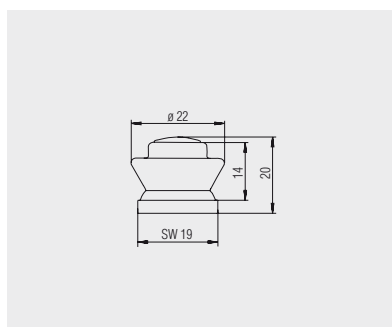
Identification plate  
240.002.011



Identification plate of CuZn nickel-plated for plugging on as well as with twist protection and stamped inscription "ON" and "OFF"



Protection cap  
343.002.023



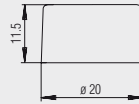
Neopren® - cap for pushbutton (M12 x 0.75) basic type 1840 as dust and water protection. Pushbutton plate on top of cap is CuZn nickel-plated.

# SERIES 1840 - SINGLE AND DOUBLE-POLE PUSHBUTTON SWITCHES

TO 6 (4) A 250 V AC



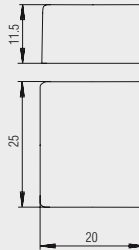
Pushbutton  
205.008.011



Pushbutton of PA black, with diameter 20 mm for assembly by customer on 1841.6101 and 1842.6101



Pushbutton  
203.106.011



Pushbutton of PA black, rectangular 20 x 25 mm for assembly by customer on 1841.6101 and 1842.6101

**PRECISION SALES INC**  
38 Bishop Hollow Rd  
Newtown Square PA 19073  
[www.precisionsales.com](http://www.precisionsales.com)  
[eparts@precisionsales.com](mailto:eparts@precisionsales.com)  
Fax : 610-353-1674  
610-359-1002